



# How To Use The Matrix

01

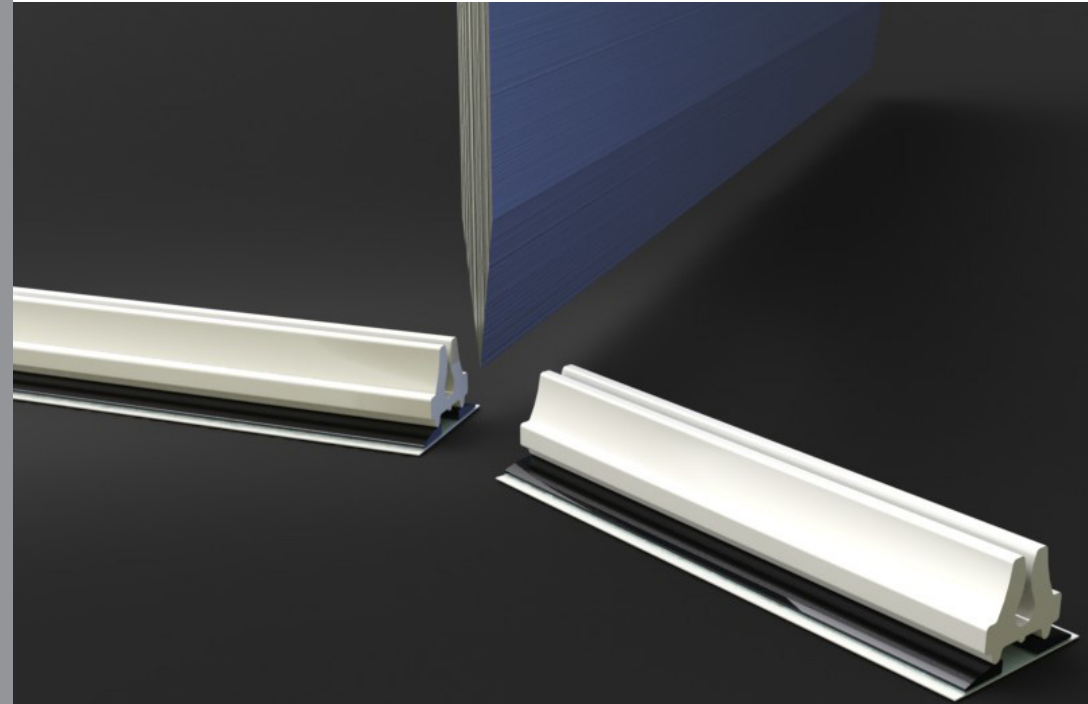
A simple guide to installing  
your new Matrix.

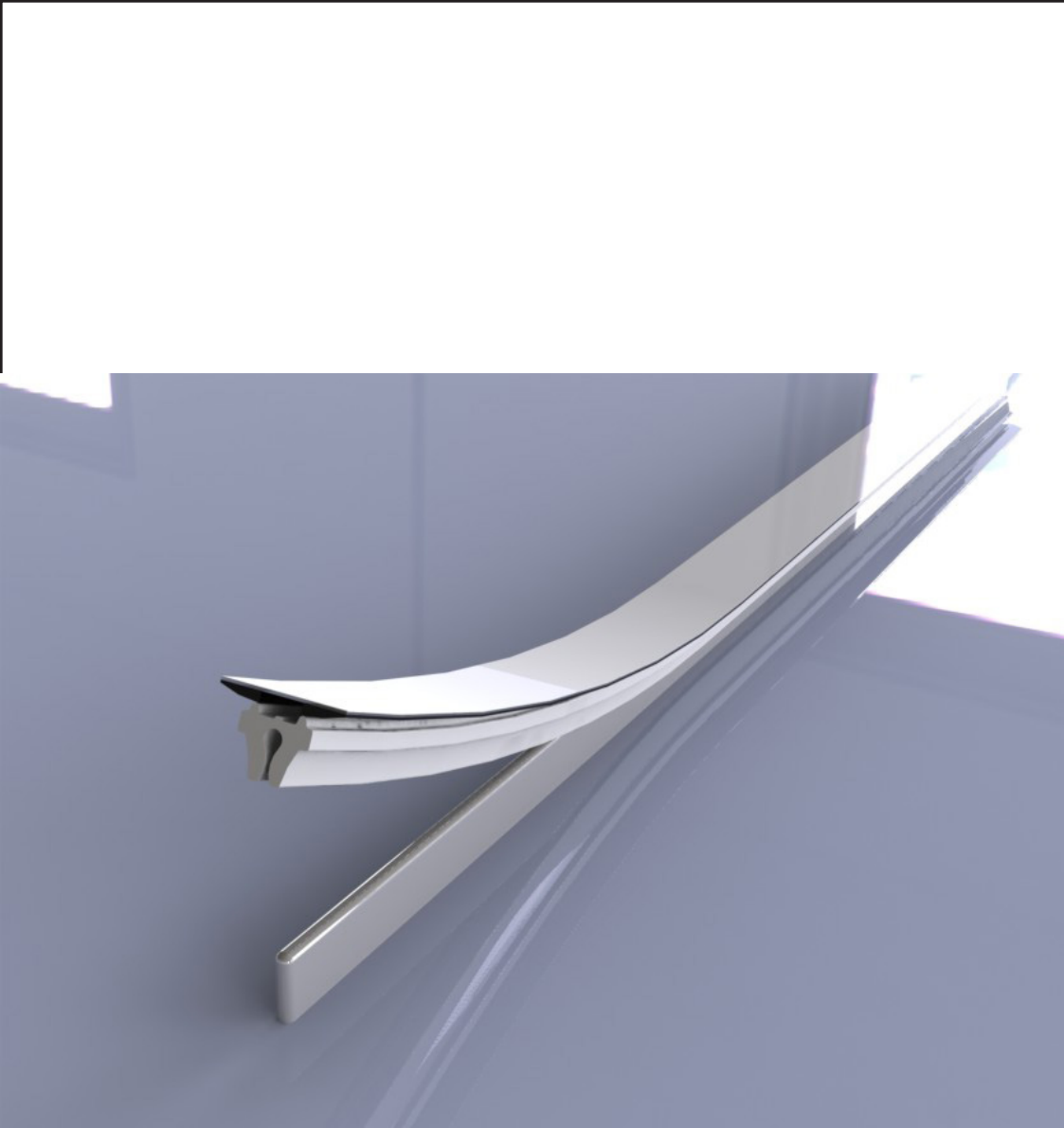


02

## Step 1...

Cut the Matrix to suit length of creasing rule.





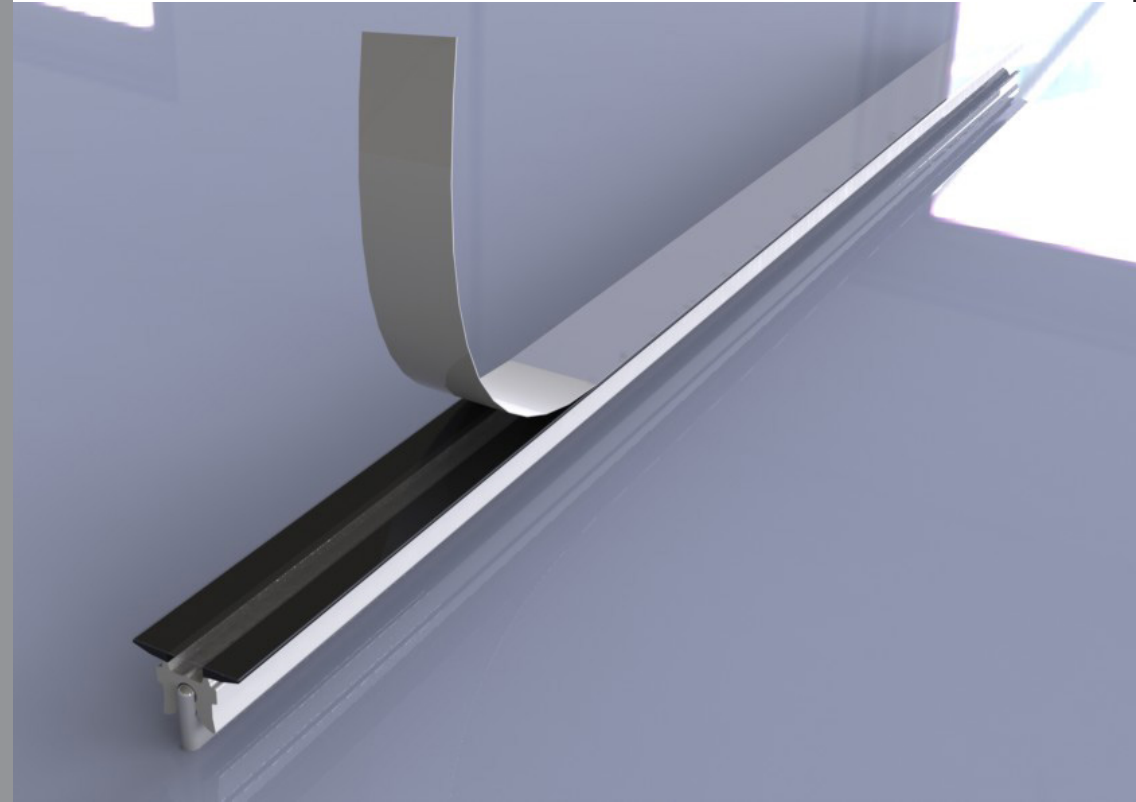
## Step 2...

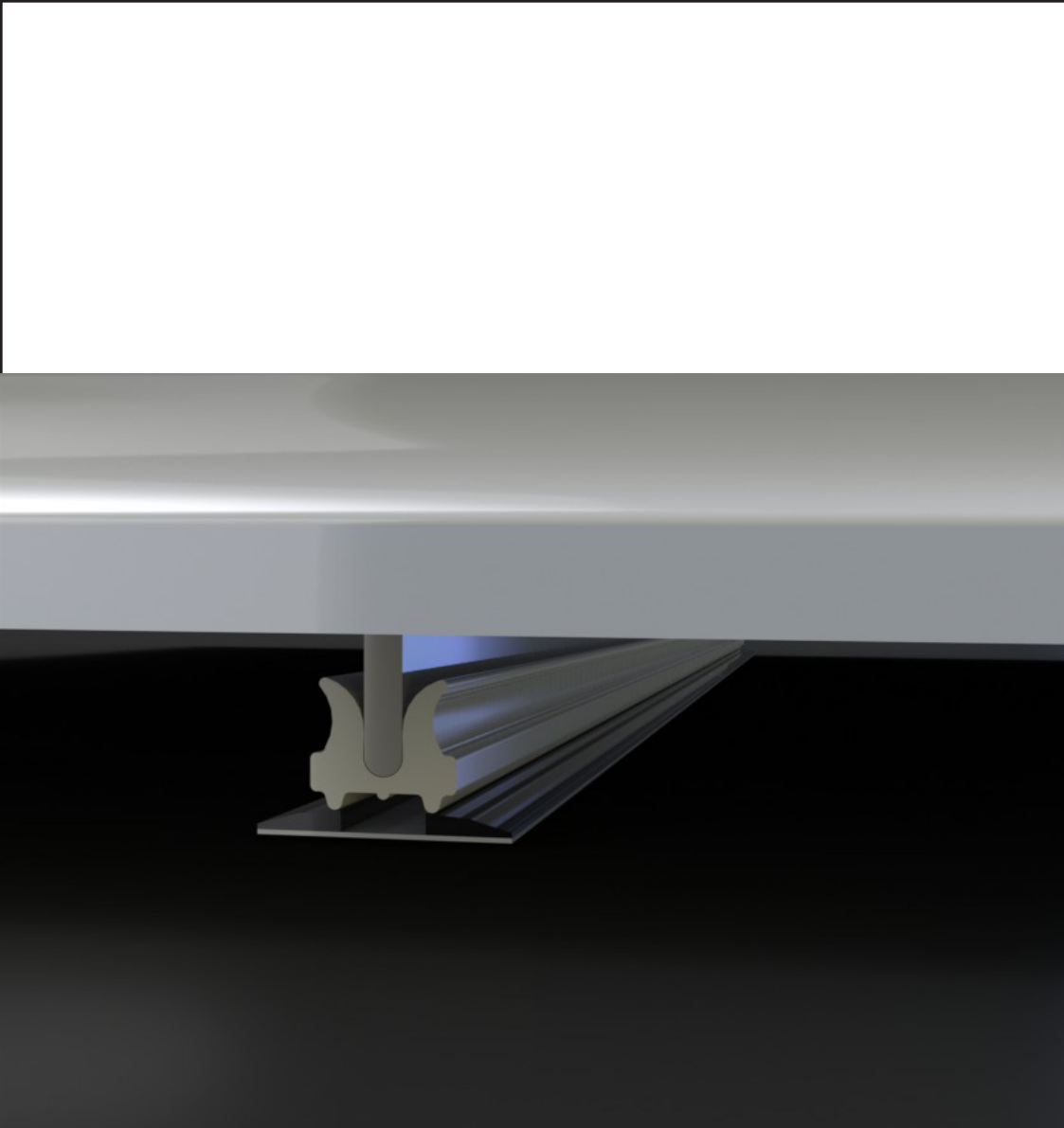
Place the Matrix on to creasing rule using precision locator.

## Step 3...

Remove backing tape to expose adhesive surface.

04





## Step 4...

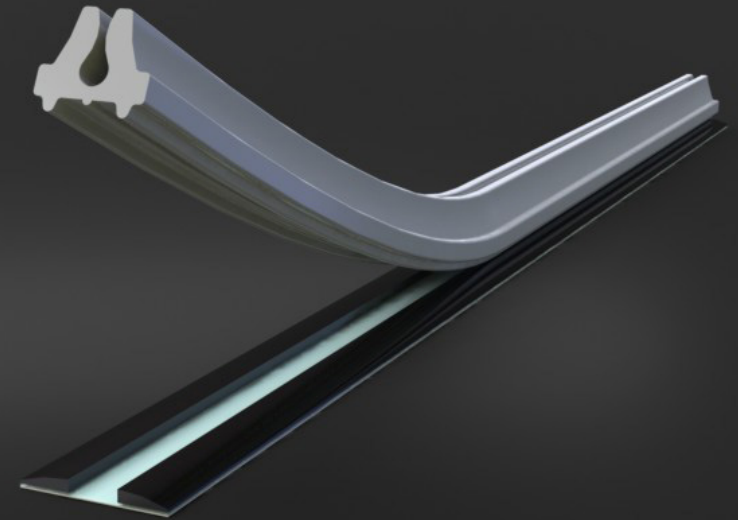
Lock die in to press and make one impression to transfer on to Platen.

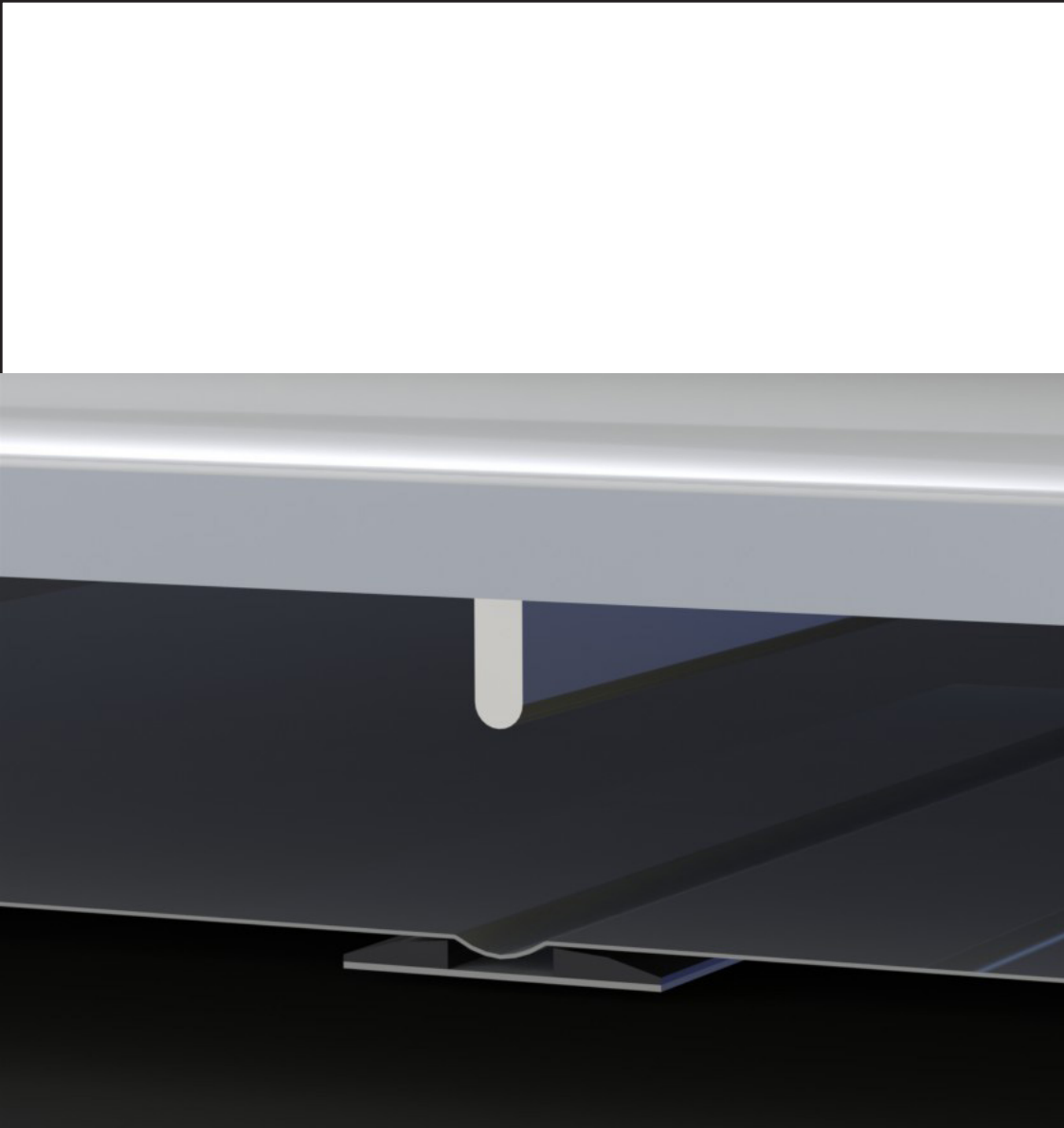
**05**

## Step 5...

Remove the locator by simply twisting the end and then pulling upwards.

06





## Step 6...

Position the board and activate one impression to test.

**07**